



CHATTERTON | REES



5 Sedlescombe Road

, London, SW6 1RE

£4,750



3



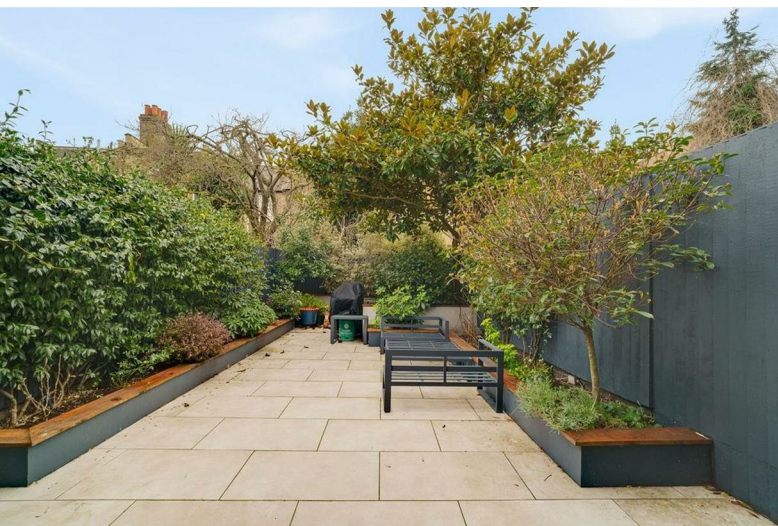
2



1



5 Sedlescombe Road



Description

An excellent three-bedroom split-level apartment finished to a very high standard, featuring a spacious open-plan living and kitchen area to the rear and a large private garden. The property offers two bathrooms, one of which is en suite to the principal bedroom.

Sedlescombe Road is ideally located just a short distance from Earl's Court and West Brompton stations, with a wide selection of shops, cafés, and local amenities close by.

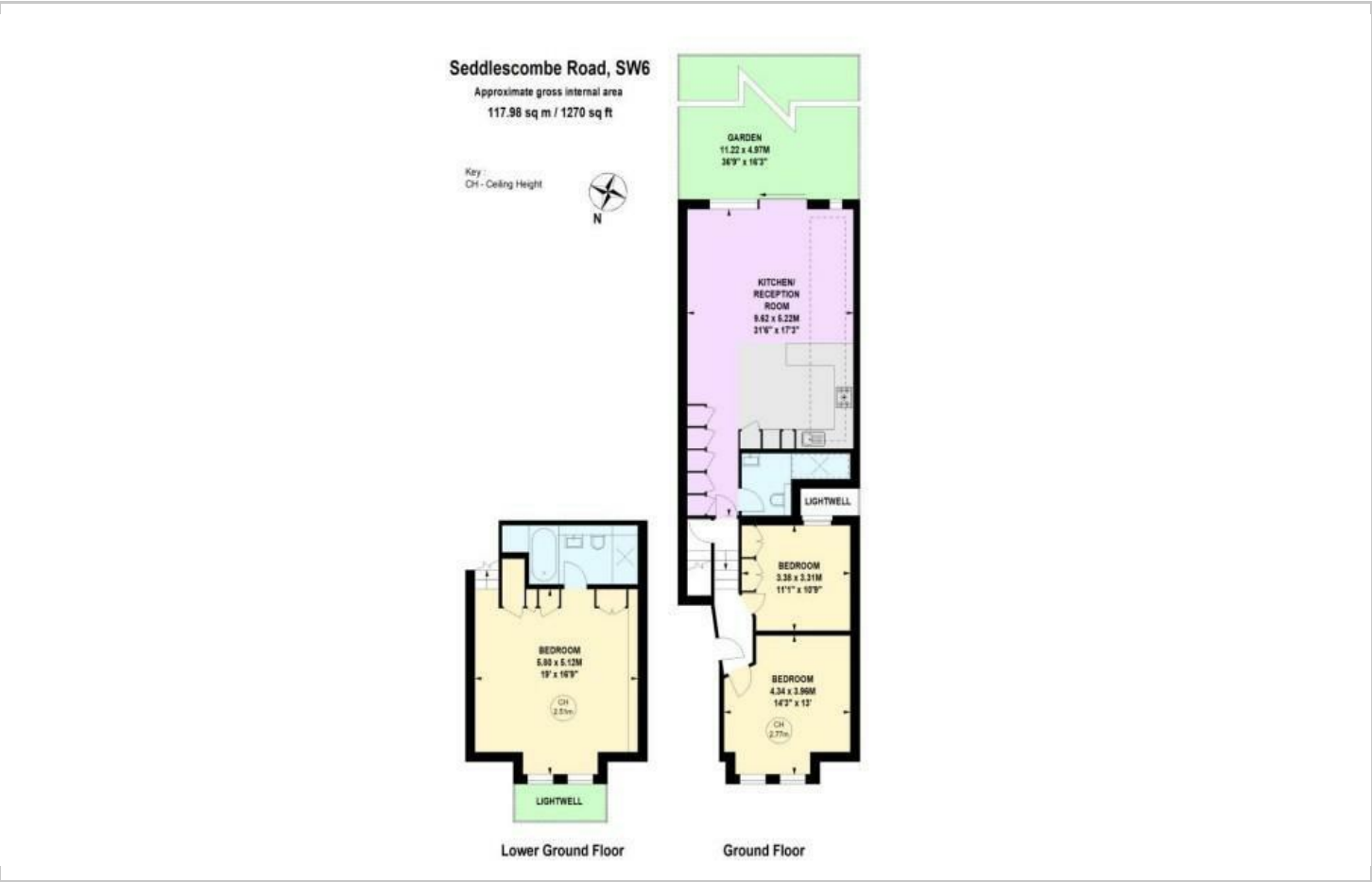
Available from mid-March. Furnished.

- Three Bedrooms
- Open Plan
- Large Garden
- Two Bathrooms
- Furnished
- Close to Tube

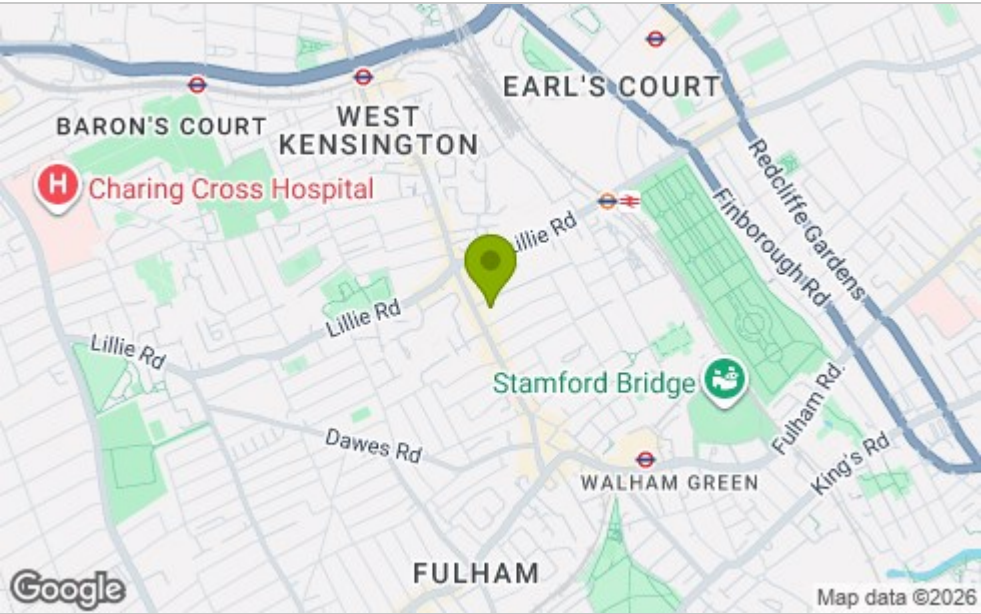




Floor Plan



Area Map



Viewing

Please contact our Chatterton Rees Office on 020 3780 0580 if you wish to arrange a viewing appointment for this property or require further information.

These particulars, whilst believed to be accurate are set out as a general outline only for guidance and do not constitute any part of an offer or contract. Intending purchasers should not rely on them as statements of representation of fact, but must satisfy themselves by inspection or otherwise as to their accuracy. No person in this firm's employment has the authority to make or give any representation or warranty in respect of the property.

Energy Efficiency Graph

